

SCAI GLOBAL INTERVENTIONAL SUMMIT

in collaboration with



TURKISH
SOCIETY OF
CARDIOLOGY



ISTANBUL, TURKEY

OCTOBER 22-24, 2010

PROGRAM COMMITTEE

Ziyad M. Hijazi, MD, MPH, FSCAI
Ted Feldman, MD, FSCAI
Oktay Ergene, MD, FSCAI
Levent Saltik, MD, FSCAI

FINAL PROGRAM



The Society for Cardiovascular
Angiography and Interventions

www.SCAI.org/GIS

WELCOME FROM THE PROGRAM COMMITTEE

Welcome to SCAI's Inaugural Global Interventional Summit in collaboration with the Turkish Society of Cardiology. Drawing from an impressive list of leaders from interventional cardiology societies and working groups from around the world, we hope you'll find that GIS is truly "Where the World of Interventional Cardiology Meets."

We've designed a program of educational opportunities nearly as diverse as our audience, leading to a cross pollination of techniques and experiences, in turn maximizing learning and allowing for participants to take information crucial to optimal patient care home with them to utilize in their day-to-day practice of medicine.

For the next three days, we'll have the opportunity to explore the latest advances in interventional therapies for coronary, peripheral, congenital, and structural heart disease together through didactic lectures, case presentations, and collaborative Q&A sessions on general and hot topics for both adult and pediatric interventional cardiologists. Mix in several live cases broadcast from Istanbul teaming up host and guest operators, as well as a Global Roundtable Discussion Series designed to promote a worldwide dialogue on the field's hottest topics, and you have a tremendous formula for the sharing of the latest developments in the field with the end result of optimizing patient outcomes through collaboration.

And could there be a better backdrop for this global gathering than our host city? Bridging Europe and Asia, East and West, Istanbul is a modern city steeped

in history, having served as the capital of the Roman, Byzantine and Ottoman empires. Perhaps nowhere in the world is home to such a diverse harmony of cultures, making it the perfect venue for this groundbreaking program. We hope that you have scheduled some time for sightseeing activities in addition to the educational journey we are about to embark on.

Join us on this journey in learning from one another and improving how we each practice our specialty. Ask questions, offer comments, share your experience, talk to the faculty after the sessions, and keep the dialogues going long after the Summit ends!



Ziyad M. Hijazi, MD, MPH, FSCAI
*Director, Rush Center for Congenital & Structural Heart Disease
 Section Chief, Pediatric Cardiology Professor of Pediatrics & Internal Medicine
 Rush University Medical Center
 Chicago, IL, UNITED STATES*



Ted Feldman, MD, FSCAI
*Director, Cardiac Catheterization Laboratory
 Evanston Hospital Cardiology Division
 Evanston, IL, UNITED STATES*



Oktay Ergene, MD, FSCAI, FESC
*President, Turkish Society of Cardiology
 Clinic Chief, Department of II. Cardiology
 İzmir Atatürk Training and Research Hospital
 İzmir, TURKEY*



Levent Saltik, MD, FSCAI
*Professor, Pediatric Cardiology Department
 Istanbul University Cerrahpasa Medical School
 Istanbul, TURKEY*





Where the World of **INTERVENTIONAL CARDIOLOGY** Meets

OVERVIEW

The World of Interventional Cardiology Meets at SCAI's Global Interventional Summit in collaboration with the

Turkish Society of Cardiology (GIS). Held in conjunction with the Turkish Society of Cardiology's National Congress, this unprecedented event is an opportunity for the leaders in interventional cardiology from across the world to share their knowledge. Moreover, it represents an effort on behalf of all interventional cardiology stakeholders to collectively bridge the geographic and cultural gaps that so often limit the dissemination of vital state-of-the-art knowledge, thus enhancing (rather than stifling) potential new developments in the field.

A spirit of cross-cultural dialogue will set the tone in an environment of collaborative teaching, learning and discovery at the GIS. This three-day program will cover the latest advances in interventional therapies of coronary, peripheral, congenital and structural heart disease. Faculty from around the world will gather to present the scientific challenges and opportunities specific to their regions, and intensive case presentation and discussion will be a focal point of the curriculum. Further, live cases will be transmitted from hospitals in Istanbul with host operators and guest operators from various societies.

EDUCATIONAL OBJECTIVES

Through the duration and at the conclusion of this program, participants will:

- Understand state-of-the-art knowledge in interventional cardiology techniques through a cross dialogue featuring of the latest information from different parts of the world;
- Distinguish state-of-the-art knowledge in the latest concepts and technologies in interventional cardiology

through extensive question and answer case-based discussion sessions;

- Review and assess the global challenges facing interventional cardiologists;
- Explore cutting edge technology in the field of interventional cardiology;
- Discuss safety and efficacy of newly developed devices to improve early and late procedural outcome after coronary intervention;
- Demonstrate understanding of new approaches to non-surgical management of peripheral vascular disease;
- Demonstrate understanding of complications associated with the management of cardiovascular disease;
- Understand the latest techniques, technologies and therapies for stroke intervention, adjunctive PCI, structural heart disease and acute MI;
- Discuss the latest advances in interventional cardiology for congenital heart disease in children and adults. Special emphasis will be on percutaneous pulmonary valve implantation; devices for atrial and ventricular level shunts and understand the long-term outcome of many therapeutic procedures; and
- Demonstrate live cases with approved and non-approved devices and their indications and technical aspects of such devices.

SUMMIT INFO

Congress Venue: Haliç (Sütlüce) Congress Center / Istanbul

Congress Language: The official language of the congress will be English.

Certificate of Attendance: To receive your certificate of attendance, GIS attendees must return a completed evaluation form (included in the registration packet) to the registration desk.



EXHIBITORS

- Alvimedica
- Cook Medical & Promed Sales
- Data Diş. Tic.
- Medisis
- Medtronic
- Occlutech
- Pfm Medical

EXHIBIT HALL INFO

FRIDAY, October 22, 2010

8:00 AM - 6:00 PM

Breaks and Lunch in the Exhibit Hall

SATURDAY, October 23, 2010

8:00 AM - 6:30 PM

Breaks and Lunch in the Exhibit Hall

SUNDAY, October 24, 2010

8:00 AM - 6:30 PM

Breaks and Lunch in the Exhibit Hall

HALIÇ HALL & FOYER (Ground Floor)



ACKNOWLEDGMENTS

SCAI expresses deep appreciation for the generous support from the following companies in making the Global Interventional Summit a HUGE success.

SILVER



BRONZE



Medtronic

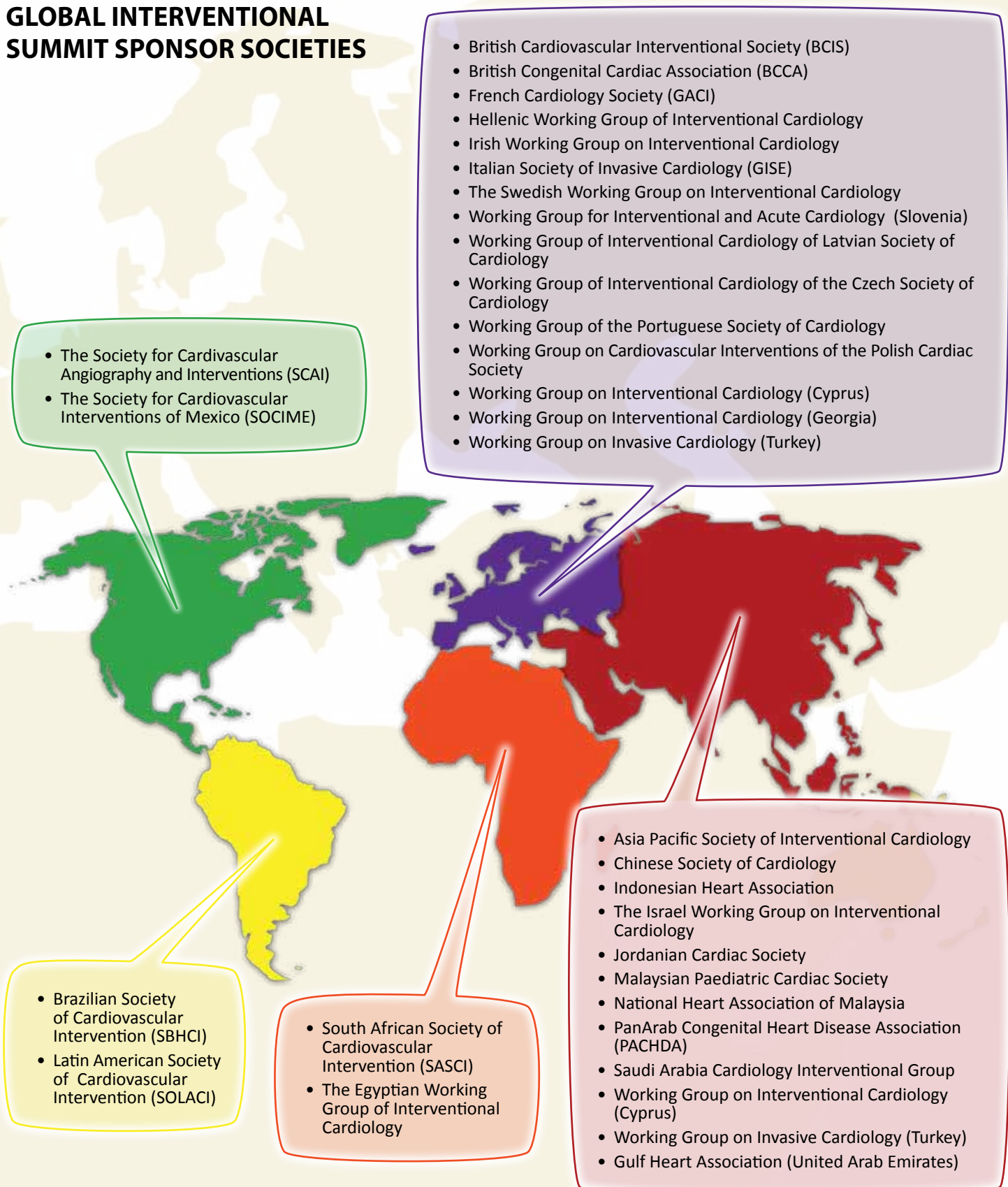


ST. JUDE MEDICAL
MORE CONTROL. LESS RISK.

SCAI thanks:

Occlutech for their support of live cases; and **Servier** for their support of the Faculty Dinner and meeting bags.

GLOBAL INTERVENTIONAL SUMMIT SPONSOR SOCIETIES



PROGRAM COMMITTEE

Ziyad M. Hijazi, MD, MPH, FSCAI
Ted Feldman, MD, FSCAI
Oktay Ergene, MD, FSCAI
Levent Saltik, MD, FSCAI

FACULTY

Lulu Abushahban, MD, FSCAI
Mehmet Agirbasli, MD
Ibrahim Al Rashdan, MD, FSCAI
Muath Alanbaei, MD
Rosli Mohd Ali, MD
Mansour Al-Joufan, MD
Mustafa A. Al-Qbandi, MD, FSCAI
Mazeni Alwi, MD
Panayiotis Avraamides, MD, FSCAI
Joseph Babb, MD, FSCAI
Mohammed Balghith, MD
Theodore Bass, MD, FSCAI
Kais Battikh, MD
Kemal Batur, MD
Jorge Belardi, MD, FSCAI
Lee Benson, MD, FSCAI
Felix Berger, MD
Robert Bersin, MD, FSCAI
Alparslan Birdane, MD
Grazyna Brzezinska-Rajszys, MD
Matjaž Bunc, MD
Paweł Buszman, MD, FSCAI
Gianfranco Butera, MD, FSCAI
Qi-Ling Cao, MD
Mario Carminati, MD, FSCAI
Graham Cassel, MD, FSCAI
Murat Çaylı, MD
Ahmet Celebi, MD
Alpay Celiker, MD
John P. Cheatham, MD, FSCAI
Jae Young Choi, MD, FSCAI
Archil Chukchrukidze, MD
Mehmet Cilingiroglu, MD, FSCAI

Michael Cowley, MD, FSCAI
Larry Dean, MD, FSCAI
Muzaffer Degertekin, MD
Joseph DeGiovanni, MD
Sait Mesut Doğan, MD
Krit Durongpisitkul, MD
Ali El Halabi, MD
Sonia El Saiedi, MD, FSCAI
Maiy El Sayed, MD
Hamdy Elliwa, MD
Çetin Erol, MD
Andrejs Erglis, MD
Horacio Faella, MD, FSCAI
Ted Feldman, MD, FSCAI
Omar Galal, MD
David Gao, MD
Murat Gençbay, MD
Ömer Göktekin, MD
Miguel Granja, MD
Mohamad Hamdan, MD
Maiy Hamdy, MD
Walid Hassan, MD, FSCAI
William E. Hellenbrand, MD, FSCAI
Felipe Heusser, MD
Firdovsi Ibrahimov, MD
Frank F. Ing, MD, FSCAI
Thomas Jones, MD, FSCAI
Petr Kala, MD, FSCAI
Tevfik Karagöz, MD
Ejder Kardeşoğlu, MD
Zaza Kavteladze, MD
Ömer Kozan, MD
Serdar Küçükoglu, MD
Hakan Kültürsay, MD
Deniz Kumbasar, MD
Geoff Lane, MD
Trong-Phi Le, MD, FSCAI
Jacek Legutko, MD
Faouzi Maatouk, MD
Tom Mabin, MD, FSCAI
Ahmed Magdy, MD, FSCAI
Jozef Masura, MD, FSCAI
Roxana Mehran, MD, FSCAI
Tarek Momenah, MD

Bulent Mutlu, MD
Hani Najm, MD
Nazmi Narin, MD
Hieu Nguyen, MD
Mithat Nurkic, MD
Ender Ödemiş, MD
Göran Olivecrona, MD, FSCAI
Zeki Öngen, MD
Ali Oto, MD
Nazan Özbarlas, MD
Ramazan Özdemir, MD
Ruhi Özyürek, MD
Alejandro Peirone, MD, FSCAI
Manolis Pursanov, MD
Shakeel Qureshi, MD, FSCAI
Hieu Quyen, MD
Carlos Ruiz, MD, FSCAI
Masood Sadiq, MD
Oktay Sancaktar, MD
Gül Sağın Saylan, MD
Dietmar Schranz, MD
Mohamed Sobhy, MD
Sunarya Soerianata, MD, FSCAI
Corrado Tamburino, MD, FSCAI
Timur Timurkaynak, MD
Kürşat Tokel, MD
Aykut Tugertimur, MD
Eralp Tutar, MD
Ercan Tutar, MD
Murat Tuzcu, MD, FSCAI
Birgül Varan, MD
Marco Wainstein, MD
Bonnie Weiner, MD, MBA, FSCAI
Nigel Wilson, MD
Muhammad Yamin, MD, FSCAI
Aylin Yıldırıncı, MD
William Yip, MD
Genco Yücel, MD
Robaayah Zambahari, MD

SCHEDULE AT A GLANCE

FRIDAY

October 22, 2010

(Full Schedule on pages 9-10)

SATURDAY

October 23, 2010

(Full Schedule on pages 11-12)

SUNDAY

October 24, 2010

(Full Schedule on pages 13-14)

	Istanbul Hall	Washington Hall	Istanbul Hall	Washington Hall	Istanbul Hall	Washington Hall
		Roundtable Discussions		Roundtable Discussions		Roundtable Discussions
8 AM	Joint: Basic		Joint: ASD		Joint: Adult Congenital Heart Disease	
9						
10	— BREAK – VISIT EXHIBITS (15 MIN) —		— BREAK – VISIT EXHIBITS (30 MIN) —		— BREAK – VISIT EXHIBITS (30 MIN) —	
11	Joint: ASD & PFO		Joint: VSD		Adult: Peripheral Intervention	Pediatric: Branch Pulmonary Arteries
12 PM						Pediatric: Embolization Therapy
1	— LUNCH – VISIT EXHIBITS —		Pediatric: Aortic Valve and Arch	Adult: Oral Sessions	— LUNCH – VISIT EXHIBITS —	
2	Adult: DES Bifurcation	Pediatric: PDA	— LUNCH – VISIT EXHIBITS —		Adult: CTO	
3	— BREAK – VISIT EXHIBITS (30 MIN) —		Aortic... (continued)		Adult: Mitral Valve	Pediatric: The Critically Ill Neonate
4	Adult: Aortic Valve	Pediatric: Techniques & How To	Pediatric: Pulmonary Valve	Adult: Oral Sessions		
5	Adult: STEMI	Pediatric: Oral Congenital/Pediatric Abstracts	Pediatric: Hybrid	Adult: Oral Sessions	Adult: Left Main & Multivessel	
6			Adult: Left Atrial Appendage	Pediatric: Special Session		
7						

* Opening Cocktail (starts at 7:00 PM)
* Opening Ceremony (starts at 8:00 PM)

SESSION COLOR CODING

Joint Adult Pediatric



GLOBAL ROUNDTABLE DISCUSSIONS

LOCATION: Washington Hall, Section B

The **Global Roundtable Discussion Series** is designed to promote a worldwide dialogue on hot topics that affect the world of interventional cardiology today. This is a unique opportunity to add your voice to the global dialogue and weigh in on these important topic areas. To register your attendance onsite for any of the roundtable discussions, please visit the registration booth or contact **Stephanie Mathias**

at smathias@scai.org. Seats are limited and sessions will fill up quickly—participation is on a first-come, first-served basis.

DISCUSSION LEADER

FRIDAY

Oct. 22 (7-8 AM)
Washington Hall,
Section B

CTO / Transradial	Joseph Babb, MD, FSCAI
Valve Therapies	Murat Tuzcu, MD, FSCAI
Cath Lab Accreditation	Bonnie Weiner, MD, MBA, FSCAI
Offlabel Pediatric / Congenital Devices	John P. Cheatham, MD, FSCAI

SATURDAY

Oct. 23 (7-8 AM)
Washington Hall,
Section B

Early Career Training / Training Standards	Joseph Babb, MD, FSCAI
Registry Development	Larry Dean, MD, FSCAI
Peripheral Vascular Disease	Robert Bersin, MD, FSCAI
Radiation in the Cath Lab	Thomas Jones, MD, FSCAI
Contrast Agents	Lee Benson, MD, FSCAI

SUNDAY

Oct. 24 (7-8 AM)
Washington Hall,
Section B

STEMI /Imaging	Roxana Mehran, MD, FSCAI
Left Main Stenting / Drug Eluting Stenting / Bifurcation Stenting ...	Ted Feldman, MD, FSCAI
Quality Standards in the Cath Lab	Theodore Bass, MD, FSCAI
Fellows Training	William E. Hellenbrand, MD, FSCAI

WORKSHOPS & ROUNDTABLE DISCUSSIONS (7:00 - 8:00 AM)

JOINT: BASIC (8:00 - 9:45 AM | Istanbul Hall)

Co-Chairs: Oktay Ergene, MD, FSCAI; Ted Feldman, MD, FSCAI; Levent Saltik, MD, FSCAI

- 8:00 AM** Assessing Hemodynamics and Operability **William E. Hellenbrand, MD, FSCAI**
8:15 AM Angiography in Interventions for CHD: An Art That Must Be Perfected **Lee Benson, MD, FSCAI**
8:30 AM How to Stock Your Cath Lab for Optimal Patient Management **Shakeel Qureshi, MD, FSCAI**
8:50 AM **Live Cases and Discussion: PDA Cases**
Commentators: Lee Benson, MD, FSCAI; Ted Feldman, MD, FSCAI; William E. Hellenbrand, MD, FSCAI; Shakeel Qureshi, MD, FSCAI
Panelists: Ali El Halabi, MD; Sonia El Saiedi, MD, FSCAI; David Gao, MD; Serdar Küçükoglu, MD; Ender Ödemiş, MD

BREAK (9:45 - 10:00 AM)

JOINT: ASD & PFO (10:00 AM - 12:00 PM | Istanbul Hall)

Co-Chairs: Alpay Celiker, MD; Ziyad M. Hijazi, MD, MPH, FSCAI; Alejandro Peirone, MD, FSCAI

- 10:10 AM** Echocardiographic & Pathological Correlations **Aykut Tugertimur, MD**
10:25 AM Stroke, Migraine & PFOs: Where We Are With Trials **Carlos Ruiz, MD, FSCAI**
10:45 AM Device Closure of PFO: Technical Tips & Tricks **Carlos Ruiz, MD, FSCAI**
11:00 AM **Live Cases and Discussion: PFO Cases**
Commentators: Ziyad M. Hijazi, MD, MPH, FSCAI; Alejandro Peirone, MD, FSCAI; Carlos Ruiz, MD, FSCAI; Aykut Tugertimur, MD
Panelists: Kemal Batur, MD; Ejder Kardeşoglu, MD; Maiy El Sayed, MD; Nazmi Narin, MD

LUNCH / VISIT EXHIBITS (12:00 - 1:00 PM)

ADULT: DES BIFURCATION (1:00 - 2:15 PM | Istanbul Hall)

Co-Chairs: Theodore Bass, MD, FSCAI; Çetin Erol, MD; Bonnie Weiner, MD, MBA, FSCAI

Panelist: Petr Kala, MD, FSCAI

- 1:00 PM** Classifications of Bifurcation: Which Technique for Which Lesion **Theodore Bass, MD, FSCAI**
1:10 PM Dedicated Bifurcation Stents **Theodore Bass, MD, FSCAI**
1:20 PM Bifurcation Case Study #1 - Nightmare Case **Mehmet Cilingiroglu, MD, FSCAI**
1:25 PM Bifurcation Case Study #2 - Technical and Clinical Decision Making **Theodore Bass, MD, FSCAI**
1:30 PM **Live Cases and Discussion: TBD**
Commentators: Theodore Bass, MD, FSCAI; Mehmet Cilingiroglu, MD, FSCAI; Mithat Nurkic, MD; Bonnie Weiner, MD, MBA, FSCAI

BREAK (2:15 - 2:45 PM)

ADULT: AORTIC VALVE (2:45 - 4:20 PM | Istanbul Hall)

Co-Chairs: Murat Tuzcu, MD, FSCAI; Carlos Ruiz, MD, FSCAI

Panelists: Matjaž Bunc, MD; Paweł Buszman, MD, FSCAI; Walid Hassan, MD, FSCAI

- 2:45 PM** Current TAVI Landscape: SAPIEN **Murat Tuzcu, MD, FSCAI**
2:55 PM Current TAVI Landscape: CoreValve **Carlos Ruiz, MD, FSCAI**
3:05 PM TAVI Fem Complication Case Study **Graham Cassel, MD, FSCAI**
3:10 PM CoreValve Case Study **Corrado Tamburino, MD, FSCAI**
3:15 PM **Live Cases and Discussion: TBD**
Commentators: Graham Cassel, MD, FSCAI; Carlos Ruiz, MD, FSCAI; Corrado Tamburino, MD, FSCAI; Murat Tuzcu, MD, FSCAI

ADULT: STEMI (4:20 - 6:00 PM | Istanbul Hall)

Co-Chairs: Joseph Babb, MD, FSCAI; Deniz Kumbasar, MD; Roxana Mehran, MD, FSCAI
Panelists: Kais Battikh, MD; Ahmed Magdy, MD, FSCAI; Robaayah Zambahari, MD

4:20 PM	Pharmacologic Management of STEMI	Roxana Mehran, MD, FSCAI
4:30 PM	PCI Strategies; Rescue, Immediate, Facilitated and Deferred	Bonnie Weiner, MD, MBA, FSCAI
4:40 PM	Systems for Management of STEMI	Murat Gençbay, MD
4:50 PM	STEMI Case Study - My Worst Nightmare	Mohamed Sobhy, MD
4:55 PM	Live Cases and Discussion: TBD	

Commentators: Joseph Babb, MD, FSCAI; Roxana Mehran, MD, FSCAI; Mohamed Sobhy, MD; Bonnie Weiner, MD, MBA, FSCAI

ADJOURN (6:00 PM)

PEDIATRIC: PDA (1:00 - 2:15 PM | Washington Hall)

Co-Chairs: William E. Hellenbrand, MD, FSCAI; Thomas Jones, MD, FSCAI; Gül Sağın Saylan, MD

1:00 PM	Echocardiographic Evaluation-Indications for Closure	Faouzi Maatouk, MD
1:12 PM	Coil Closure of PDA	Alpay Celiker, MD
1:24 PM	pfm Nit Occlud: Technique & Results	Trong-Phi Le, MD, FSCAI
1:36 PM	Device Closure of PDA in Children Beyond One Month of Age	Gianfranco Butera, MD, FSCAI
1:48 PM	Closure of the PDA in Small Babies: Technical Considerations & Outcome	Gianfranco Butera, MD, FSCAI
2:00 PM	New Device for PDA Closure: The PDA-R Device	Miguel Granja, MD

BREAK (2:15 - 2:45 PM)

PEDIATRIC: TECHNIQUES & HOW TO (2:45 - 4:20 PM | Washington Hall)

Co-Chairs: Mustafa A. Al-Qbandi, MD, FSCAI; Mazeni Alwi, MD; John P. Cheatham, MD, FSCAI

2:45 PM	Transhepatic Puncture	Thomas Jones, MD, FSCAI
3:03 PM	Trans-septal Puncture	John P. Cheatham, MD, FSCAI
3:20 PM	RF Perforation: When & How	Shakeel Qureshi, MD, FSCAI
3:37 PM	Critical PS & PA/IVS	Mazeni Alwi, MD
3:55 PM	How to Manage Vascular Complications (Arterial & Venous)	Krit Durongpisitkul, MD

PEDIATRIC: ORAL CONGENITAL/PEDIATRIC ABSTRACTS (4:20 - 6:00 PM | Washington Hall)

Co-Chairs: John P. Cheatham, MD, FSCAI; Jae Young Choi, MD, FSCAI; Joseph DeGiovanni, MD; Krit Durongpisitkul, MD

4:20 PM	Transcatheter Closure of Patent Ductus Arteriosus in Infants Weighing Less than 5kg ..	Nam Kyun Kim, MD
4:32 PM	Single Center Experience of Transcatheter Completion of Fontan in Saudi Arabia ..	Mashail Abdulaziz Bin Obaidan, MD
4:44 PM	Transcatheter Occlusion of Antegrade Additional Pulmonary Blood Flow After Bidirectional Glenn Anastomosis Using Cardiofix Duct Occluder	Abdullah Erdem, MD
4:56 PM	Percutaneous Closure of Ventricular Septal Defects in Adults	Ramazan Akdemir, MD
5:08 PM	Simultaneous Two Stents (Genesis xd) Implantations in the Treatment of Bilateral Bifurcation Stenosis by Kissing Method: Report of Two Cases	Abdullah Erdem, MD
5:20 PM	A New Device (Cardi-O-Fix Duct Occluder) for Percutaneous Closure of Patent Ductus Arteriosus: Early and Midterm Results	Ahmet Celebi, MD
5:32 PM	A New Device (Cardi-O-Fix Occluder) for ASD Closure: Early and Midterm Results ..	Abdullah Erdem, MD

ADJOURN (6:00 PM)

OPENING CEREMONY (STARTS AT 7:30 PM)

WORKSHOPS & ROUNDTABLE DISCUSSIONS (7:00 - 8:00 AM)

JOINT: ASD (8:00 - 9:45 AM | Istanbul Hall)

Co-Chairs: Ted Feldman, MD, FSCAI; Ali Oto, MD; Nazan Özbarlas, MD; Alejandro Peirone, MD, FSCAI

- 8:00 AM** Selection of Patients for Device Closure of ASDs **Geoff Lane, MD**
8:15 AM Technical Aspects of ASD Closure **Masood Sadiq, MD**
8:30 AM Available Devices for ASD Closure **Miguel Granja, MD**
8:45 AM Acute & Long Term Outcome **Jozef Masura, MD, FSCAI**
9:00 AM **Live Cases and Discussion: ASD Closure**
Commentators: Felix Berger, MD; Ted Feldman, MD, FSCAI; Geoff Lane, MD; Jozef Masura, MD, FSCAI; Alejandro Peirone, MD, FSCAI; Masood Sadiq, MD
Panelists: Mazeni Alwi, MD; Ercan Tutar, MD; Sonia El Saiedi, MD, FSCAI; David Gao, MD; Eralp Tutar, MD

BREAK (9:45 - 10:15 AM)

JOINT: VSD (10:15 AM - 12:00 PM | Istanbul Hall)

Co-Chairs: Maiy El Sayed, MD; Ziyad M. Hijazi, MD, MPH, FSCAI; Shakeel Qureshi, MD, FSCAI

- 10:15 AM** Pre-selection for Device Closure **Mohamad Hamdan, MD**
10:30 AM Technical Considerations of VSD Closure **Mario Carminati, MD, FSCAI**
10:45 AM Post Infarct VSDs: Everything You Need to Know **Joseph DeGiovanni, MD**
11:00 AM Complications of VSD Closure **Jozef Masura, MD, FSCAI**
11:15 AM **Live Cases and Discussion: VSD Closure**
Commentators: Joseph DeGiovanni, MD; Maiy El Sayed, MD; Mohamad Hamdan, MD; Ziyad M. Hijazi, MD, MPH, FSCAI; Jozef Masura, MD, FSCAI; Shakeel Qureshi, MD, FSCAI
Panelists: Ali El Halabi, MD; Faouzi Maatouk, MD; Aykut Tugertimur, MD

PEDIATRIC: AORTIC VALVE AND ARCH (12:00 - 2:45 PM | Istanbul Hall)

Co-Chairs: Felix Berger, MD; Faouzi Maatouk, MD; Kürşat Tokel, MD

- 12:00 PM** Echocardiographic Evaluation of AS & Coarct **Aykut Tugertimur, MD**
12:10 PM Indications for Intervention in AS/Coarct **Felipe Heusser, MD**
12:25 PM Balloon Aortic Valvuloplasty: Technique & Outcome **Alejandro Peirone, MD, FSCAI**
12:40 PM Balloon Angioplasty of Coarctation: When and How **William Yip, MD**

LUNCH / VISIT EXHIBITS (1:00 - 2:45 PM)

- 2:00 PM** **Live Cases and Discussion: AS/Coarctation**
Commentators: Felix Berger, MD; Felipe Heusser, MD; Faouzi Maatouk, MD; Dietmar Schranz, MD; Aykut Tugertimur, MD; William Yip, MD
Panelists: David Gao, MD; Miguel Granja, MD; Tevfik Karagöz, MD; Trong-Phi Le, MD, FSCAI

PEDIATRIC: PULMONARY VALVE (2:45 - 4:15 PM | Istanbul Hall)

Co-Chairs: Felix Berger, MD; Geoff Lane, MD; Tarek Momenah, MD

- 2:45 PM** Indications for Replacement & Work-up of Patients with Pulmonary Regurgitation ... **Thomas Jones, MD, FSCAI**
3:00 PM The Melody Valve: Technique & Outcome **Mansour Al-Joufan, MD**
3:15 PM The Edwards Sapien THV **Tarek Momenah, MD**
3:30 PM **Live Cases and Discussion: Pulmonary Valve Implantation**
Commentators: Mansour Al-Joufan, MD; Thomas Jones, MD, FSCAI; Geoff Lane, MD; Tarek Momenah, MD

PEDIATRIC: HYBRID (4:15 - 5:30 PM | Istanbul Hall)

Co-Chairs: David Gao, MD; Dietmar Schranz, MD; Birgül Varan, MD

- | | | |
|----------------|--|------------------------------------|
| 4:15 PM | What is a Hybrid Lab? Do I Really Need One? | John P. Cheatham, MD, FSCAI |
| 4:30 PM | Hybrid Stage 1 for HLHS | Dietmar Schranz, MD |
| 4:45 PM | Perventricular Closure of VSDs | Qi-Ling Cao, MD |
| 5:00 PM | Intraoperative Stenting | Frank F. Ing, MD, FSCAI |
| 5:15 PM | Surgical Results for Pulmonary Valve Replacement: When, How, and Outcome ... | Hani Najm, MD |

PEDIATRIC: SPECIAL SESSION (5:30 - 6:30 PM | Washington Hall)

Co-Chairs: Ziyad M. Hijazi, MD, MPH, FSCAI; Thomas Jones, MD, FSCAI; Levent Saltik, MD, FSCAI

Joint Societal Session: Nightmare Cases in the Cath Lab

Case Presenters: Mustafa A. Al-Qbandi, MD, FSCAI; Ahmet Celebi, MD; Sonia El Saiedi, MD, FSCAI; Manolis Pursanov, MD; Hieu Quyen, MD

ADJOURN (6:30 PM)

ADULT: ORAL SESSIONS - ACUTE MYOCARDIAL INFARCTION/MYOCARDIAL INFARCTION (12:00 - 2:45 PM | Washington Hall)

Co-Chairs: Joseph Babb, MD, FSCAI; Robert Bersin, MD, FSCAI; Sait Mesut Doğan, MD

- | | | |
|-----------------|---|------------------------------------|
| 12:00 PM | Impact of Pain to Balloon Time and Angiographic Morphologic Features on Development of No-Reflow Phenomenon in Patients Treated with Primary Angioplasty .. | Ali Cevat Tanalp, MD |
| 12:15 PM | Comparison of the Results of Direct Stenting Versus Conventional Stenting According to Baseline TIMI Flow in Patients with Acute Myocardial Infarction: Is Direct Stenting Better? | Vecih Oduncu, MD |
| 12:30 PM | Gender-Related Differences in Clinical Outcome in ST-Elevation Myocardial Infarction Reperfusion Treatment Network- STEMI BRIANZA: Prospective Observational Registry of Acute Myocardial Infarction Treatment in a Developing Local Network .. | Renata Rogacka, MD |
| 12:45 PM | Outcome of Primary Percutaneous Coronary Intervention (PCI) of Ostial Versus Nonostial Occlusion of Left Anterior Descending Artery | Jawaid Akbar Sial, MD |
| 1:00 PM | Baseline B-Type Natriuretic Peptide Level and Neutrophil-Lymphocyte Ratio Predicts Infarct Related Artery Patency in Acute Myocardial Infarction Patients Treated with Primary Angioplasty | Vecih Oduncu, MD |
| 1:15 PM | Changes in Left Ventricular Volumes After Late Revascularization of an Occluded Infarct Related Artery | Puste Ismayil Khalilova, MD |
| 1:30 PM | The Association Between the Admission Plasma BNP Levels and Coronary Collateral Development in Patients with Acute Coronary Syndrome | Özlem Özcan Çelebi, MD |
| 1:45 PM | Primary Coronary Intervention for ST Elevation Myocardial Infarction in a Starting Heart Center in Indonesia: The First 100 Patients | Yahya Berkahanto Juwana, MD |
| 2:00 PM | Angiographic Predictors and Clinical Significance of Distal Embolization in Patients with Acute Myocardial Infarction Treated with Mechanical Reperfusion | Vecih Oduncu, MD |
| 2:15 PM | Tirofiban High Bolus Dose vs. Abciximab in Acute STEMI Patients Undergoing Primary PCI TAMIP Study | Mohammed Balghith, MD |

LUNCH / VISIT EXHIBITS (1:00 - 2:45 PM)

ADULT: ORAL SESSIONS - VALVE AND STRUCTURAL (2:45 - 4:15 PM | Washington Hall)

Co-Chairs: Murat Çaylı, MD; Larry Dean, MD, FSCAI

- 2:45 PM** Use of Intracardiac Echocardiography in the Cardiac Catheterization Laboratory: The Largest Report of Single Operator Experience **Hosakote Nagaraj, MD**
- 3:00 PM** Subgroup Analysis of Hemodynamic and Clinical Response to Percutaneous Mitral Annuloplasty for Functional Mitral Regurgitation in the TITAN™ Trial **Ted Feldman, MD, FSCAI**
- 3:15 PM** Safety and Efficacy Comparison between Implanted and Non-Implanted Patients in the TITAN Trial Using Percutaneous Mitral Annuloplasty to Treat Functional Mitral Regurgitation **Ted Feldman, MD, FSCAI**
- 3:30 PM** Interesting Balloon Hardware Related Complications In Percutaneous Balloon Mitral Valvuloplasty **Thomas George, MD**
- 3:45 PM** Acute Results of Percutaneous Mitral Balloon Valvuloplasty: A Single Center Study .. **Ayşe Çolak, MD**
- 4:00 PM** A Reliable Method to Avoid Coronary Artery Compression During Melody Valve Implantation: Experience of the U.S. Clinical Study **Thomas Jones, MD**

ADULT: ORAL SESSIONS - UNUSUAL NEW FINDINGS (4:15 - 5:30 PM | Washington Hall)

Co-Chairs: Alparslan Birdane, MD; Michael Cowley, MD, FSCAI

- 4:15 PM** Comparison of Operator Radiation Exposure During Coronary Angiograms and Interventions by Radial and Femoral Routes: Can We Decrease the Risk with Increased Experience? **Muhammad Tariq Farman, MD**
- 4:30 PM** Angiographic Findings of Tako-Tsubo Cardiomyopathy **Serap Sobnosky, MD**
- 4:45 PM** Percutaneous Revascularization of Total or Subtotal Left Main Occlusion in the Settings of Acute Myocardial Infarction **Kanber Ocal Karabay, MD**
- 5:00 PM** CROSSER: Recanalization of Coronary Chronic Total Occlusions Utilizing High Frequency Vibrational Energy **Raghotham Patlola, MD**
- 5:15 PM** Management of Hemoptysis by Transcatheter Endovascular Intervention **Ashok Dhar, MD**

ADULT: LEFT ATRIAL APPENDAGE (5:30 - 6:50 PM | Istanbul Hall)

Co-Chairs: Mehmet Agirbasli, MD; Ömer Göktekin, MD; Murat Tuzcu, MD, FSCAI

Panelists: Göran Olivecrona, MD, FSCAI

- 5:30 PM** Imaging of the Appendage **Murat Tuzcu, MD, FSCAI**
- 5:40 PM** Trial Results **Muzaffer Degertekin, MD**
- 5:50 PM** Devices for & Techniques for LAA Closure **Carlos Ruiz, MD, FSCAI**
- 6:00 PM** LAA Occlusion Case Study **Carlos Ruiz, MD, FSCAI**

ADJOURN (6:00 PM)

SUNDAY OCTOBER 24, 2010

WORKSHOPS & ROUNDTABLE DISCUSSIONS (7:00 - 8:00 AM)

JOINT: ADULT CONGENITAL HEART DISEASE (8:00 - 9:45 AM | Istanbul Hall)

Co-Chairs: Muath Alanbaei, MD; Ahmet Celebi, MD; Ziyad M. Hijazi, MD, MPH, FSCAI

8:00 AM	Scope of the Problem	Muath Alanbaei, MD
8:15 AM	Coarctation of the Aorta in the Adult Patient	Grazyna Brzezinska-Rajszy, MD
8:30 AM	Patients With Single Ventricle Physiology	Geoff Lane, MD
8:45 AM	Patients Post Tetralogy Repair	Nigel Wilson, MD
9:00 AM	Live Case and Discussion: Coarctation in Adult	
	Commentators: Muath Alanbaei, MD; Grazyna Brzezinska-Rajszy, MD; Ziyad M. Hijazi, MD, MPH, FSCAI; Geoff Lane, MD; Nigel Wilson, MD	

BREAK (9:45 - 10:15 AM)

PEDIATRIC: BRANCH PULMONARY ARTERIES (10:15 - 11:15 AM | Washington Hall)

Co-Chairs: Lee Benson, MD, FSCAI; Miguel Granja, MD; Felipe Heusser, MD; Ramazan Özdemir, MD

10:15 AM	How to Assess the Branch Pulmonary Arteries: CT's / MRI's or Angios	Frank F. Ing, MD, FSCAI
10:30 AM	Balloon Angioplasty of the PA's	Frank F. Ing, MD, FSCAI
10:45 AM	Cutting Balloon Angioplasty	Lee Benson, MD, FSCAI
11:00 AM	Stent Implantation: When, How & Outcomes	Felix Berger, MD

PEDIATRIC: EMBOLIZATION THERAPY (11:15 AM - 12:00 PM | Washington Hall)

Co-Chairs: Lee Benson, MD, FSCAI; Miguel Granja, MD; Felipe Heusser, MD

11:15 AM	Equipment Needed: Closure of PAVM	Shakeel Qureshi, MD, FSCAI
11:30 AM	AP Collaterals: When and How to Close Them	Gianfranco Butera, MD, FSCAI
11:45 AM	Venovenous Collaterals: When and How	Maiy El Sayed, MD
12:00 PM	Retrieval of Embolized FB	Omar Galal, MD

LUNCH (12:00 - 1:00 PM)

PEDIATRIC: THE CRITICALLY ILL NEONATE (2:00 - 3:00 PM | Washington Hall)

Co-Chairs: Horacio Faella, MD, FSCAI; Ruhi Özyürek, MD

2:00 PM	Echocardiographic Assessment	Aykut Tugertimur, MD
2:15 PM	Intensivist Role	Dietmar Schranz, MD
2:30 PM	Surgeon's Perspectives	Hani Najm, MD
2:45 PM	Interventionalist's Perspectives	Lulu Abushahban, MD, FSCAI

ADJOURN (3:00 PM)

ADULT: PERIPHERAL INTERVENTION (10:15 AM - 12:00 PM | Istanbul Hall)

Co-Chairs: Robert Bersin, MD, FSCAI; Mehmet Cilingiroglu, MD, FSCAI

Panelists: Rosli Mohd Ali, MD; Oktay Sancaktar, MD; Muhammad Yamin, MD, FSCAI

10:15 AM	Impact of CREST on Patient Selection for CAS	Robert Bersin, MD, FSCAI
10:25 AM	Drug Eluting Stents and Balloons for the SFA	Mehmet Cilingiroglu, MD, FSCAI
10:35 AM	Renal or Carotid Case Study	Marco Wainstein, MD
10:40 AM	SFA/Peripheral Case Study - My Worst Nightmare	Sunarya Soerianata, MD, FSCAI
10:45 AM	Live Case and Discussion: Carotid Intervention	
	Commentators: Robert Bersin, MD, FSCAI; Mehmet Cilingiroglu, MD, FSCAI; Sunarya Soerianata, MD, FSCAI; Marco Wainstein, MD	

LUNCH (12:00 - 1:00 PM)

ADULT: CTO (1:00 - 2:30 PM | Istanbul Hall)

Co-Chairs: Theodore Bass, MD, FSCAI; Larry Dean, MD, FSCAI; Ömer Kozan, MD

Panelists: Ibrahim Al Rashdan, MD, FSCAI ; Firdovsi Ibrahimov, MD; Zaza Kavteladze, MD; Bulent Mutlu, MD

1:00 PM	Advances in CTO Technology and Equipment	Theodore Bass, MD, FSCAI
1:10 PM	Clinical Outcomes from PCI for CTO	Larry Dean, MD, FSCAI
1:20 PM	CTO Case Study - When Things Go Wrong	Larry Dean, MD, FSCAI
1:25 PM	CTO Retrograde Case Study	Timur Timurkaynak, MD
1:30 PM	Live Case and Discussion: TBD	
	Commentators: Theodore Bass, MD, FSCAI; Larry Dean, MD, FSCAI; Zeki Öngen, MD; Ramazan Özdemir, MD	

ADULT: MITRAL VALVE (2:30 - 4:00 PM | Istanbul Hall)

Co-Chairs: Ted Feldman, MD, FSCAI; Murat Tuzcu, MD, FSCAI

Panelists: Graham Cassel, MD, FSCAI; Andrejs Erglis, MD; Shakeel Qureshi, MD, FSCAI

2:30 PM	Percutaneous Annuloplasty: Indirect & Direct	Ted Feldman, MD, FSCAI
2:40 PM	MitraClip Trial Results and Update	Ted Feldman, MD, FSCAI
2:50 PM	Mitral Valvuloplasty Case Study	Mohammed Balghith, MD
2:55 PM	Percutaneous Mitral Repair Case Study	Mehmet Cilingiroglu, MD, FSCAI

ADULT: LEFT MAIN & MULTIVESSEL (4:00 - 5:30 PM | Istanbul Hall)

Co-Chairs: Michael Cowley, MD, FSCAI; Hakan Kültürsay, MD; Deniz Kumbasar, MD

Panelists: Archil Chukchukidze, MD; Hamdy Elliwa, MD; Jacek Legutko, MD

4:00 PM	Today's Indications for LM PCI	Jorge Belardi, MD, FSCAI
4:10 PM	Patient Selection for Multivessel PCI	Michael Cowley, MD, FSCAI
4:20 PM	IVUS or OCT Case Study LM or Multivessel	Panayiotis Avraamides, MD, FSCAI
4:25 PM	LM Case Study	Ömer Göktekin, MD
4:30 PM	Live Case and Discussion: TBD	
	Commentators: Panayiotis Avraamides, MD, FSCAI; Jorge Belardi, MD, FSCAI; Michael Cowley, MD, FSCAI; Aylin Yıldırım, MD	

ADJOURN (5:30 PM)

POSTER SESSIONS

FRIDAY, OCTOBER 22

ACUTE CORONARY SYNDROMES, MYOCARDIAL INFARCTION, THROMBECTOMY AND VULNERABLE PLAQUE

- ABSTRACT 90** Discriminative ability of raised brain natriuretic peptide level in detecting acute coronary syndrome in opium addicted versus non-addicted patients
- ABSTRACT 91** B-type natriuretic peptide as a major determinant of serum lipid profiles in patients with acute coronary syndromes
- ABSTRACT 102** Is Pepper Spray a Triggering Factor in Myocardial Infarction? A Case Report
- ABSTRACT 107** Diagnosis And Treatment Of AMI Based On Clinical And Electrocardiographic Findings
- ABSTRACT 109** Acute coronary syndrome secondary to diclofenac induced anapylaxis: Case report
- ABSTRACT 116** An unusual primary angioplasty
- ABSTRACT 119** Clinical characteristics, mode of presentation and hospital outcome in young Egyptian patients with acute coronary syndromes (ACS)
- ABSTRACT 121** Outcome of Primary Percutaneous Coronary Intervention at Public Sector Tertiary Care Hospital in Pakistan
- ABSTRACT 125** Acute myocardial infarction due to antiphospholipid antibody syndrome in a young pregnant woman
- ABSTRACT 140** Six Months Clinical Efficacy and Safety Study on Acute ST Elevation Myocardial Infarction Patients Undergoing Primary Percutaneous Coronary Intervention Using Endeavour Resolute Stent Versus Driver Bare Metal Stent: A Single Centre
- ABSTRACT 157** EFFECTS OF NUTRITION in DEVELOPMENT OF CORONARY ARTERY OBSTRUCTION ON PATIENTS WHO UNDERGONE CORONARY- ANGIOGRAPHY
- ABSTRACT 172** Late bare-metal stent thrombosis in a patient with Crohn's disease
- ABSTRACT 179** ST segment elevation in leads V1 to V6 due to isolated right ventricular branch occlusion caused by thrombosis migration after right coronary artery angioplasty
- ABSTRACT 209** Impact of Pre-Hospital Direct Notification to Cardiologist and Activation of Catheterization Laboratory on Door-to-Balloon Time for Patients with ST-Segment Elevation Myocardial Infarction Undergoing Primary Percutaneous Coronary Intervention
- ABSTRACT 210** Impact of Timing of Intervention on One-Year Clinical Outcomes in Non-ST-Segment Elevation Myocardial Infarction: Analysis from the Korea Acute Myocardial Infarction Registry
- ABSTRACT 211** The Prevalence of the metabolic syndrome and its impact on the left ventricular systolic function in the patients with non-diabetic first ST elevating myocardial infarction
- ABSTRACT 213** The relationship between hemoglobin level on admission and left ventricular systolic function in patients with first ST elevating myocardial infarction

FRIDAY, OCTOBER 22 (CONTINUED)

ADULT CONGENITAL

- ABSTRACT 100** Stenting of Aortic Coarctation in adults: Single Group Three Center Experience
- ABSTRACT 146** Recurrent gastrointestinal bleeding in patient with eisenmenger syndrome secondary to atrial septal defect, a case report
- ABSTRACT 162** Transcatheter closure of Secundum Atrial Septal Defect in the Elderly
- ABSTRACT 170** The safety and feasibility of transcatheter closure of atrial septal defect without balloon sizing

ANGIOGENESIS, MYOGENESIS, CELL THERAPY AND GENE THERAPY

- ABSTRACT 191** Markers of Progenitor Cell Recruitment and Differentiation Rise Early During Ischemia and Continue to Rise During Resuscitation in a Porcine Acute Ischemia Model

COMPLEX PCI, RESTENOSIS, LEFT MAIN & MULTI-VESSEL INTERVENTION

- ABSTRACT 153** The safety and efficacy of using drug-eluting stent in coronary lesions with chronic total occlusion

SATURDAY, OCTOBER 23

CONTRAST AGENTS

- ABSTRACT 202** Elevated B-Type Natriuretic Peptide Predicts Contrast Induced Nephropathy in Coronary Interventions

ENDOVASCULAR AND PERIPHERAL INTERVENTIONS (INCLUDING NEUROVASCULAR AND CAROTID)

- ABSTRACT 133** Hybrid approach to thoracic aortic aneurysms and dissections: clinical outcomes at a single center
- ABSTRACT 134** Results of Percutaneous Transluminal Treatment in Infrarenal Total Aortic Obstruction
- ABSTRACT 164** The utility and safety of antegrade punctures in combination with Mynx Vascular Closure Device in patients undergoing outpatient percutaneous peripheral interventions
- ABSTRACT 169** The Same Day Discharge After Coronary and Peripheral Interventions Utilizing a Bivalirudin and Vascular Closure Devices. Go Home Study
- ABSTRACT 176** Diabetes Predicts Failure Of Percutaneous Renal Revascularization In The Treatment Of Atherosclerotic Renal Artery Stenosis
- ABSTRACT 177** Percutaneous Renal Revascularization Of Atherosclerotic Renal Artery Stenosis Does Not Prevent Clinical Deterioration In Patients With Long-Standing Diabetes

POSTER SESSIONS

SATURDAY, OCTOBER 23 (CONTINUED)

IMAGING: CT, MR AND NON-INVASIVE IMAGING

- | | |
|---------------------|--|
| ABSTRACT 98 | Evaluation of Coronary Artery Plaques and Nonalcoholic Fatty Liver Disease by 64-Detector Multislice Computed Tomography |
| ABSTRACT 104 | Giant left atrial thrombus in mild mitral stenosis without embolic complication |
| ABSTRACT 110 | Evaluation of cardiac functions with tissue doppler imaging in prediabetic subjects |
| ABSTRACT 145 | Asymptomatic aortic dissection late after aortic valve replacement |
| ABSTRACT 171 | Cerebral embolism caused from left atrial myxoma |
| ABSTRACT 201 | Assessment of Endothelial Function Using Flow-Mediated Dilation and Constriction: Complementary Information in the Prediction of Coronary Artery Disease |
| ABSTRACT 214 | Repeated prolonged thrombolytic therapy after initial unsuccessful thrombolysis in massive pulmonary embolism: A case report |

INTRAVASCULAR IMAGING (IVUS)/PHYSIOLOGY

- | | |
|---------------------|---|
| ABSTRACT 113 | The impact of lesion length on the functional severity of coronary stenosis determined by fractional flow reserve |
| ABSTRACT 151 | Comparison of intravascular ultrasound and angiographical guided drug-eluting stent implantation |

LEFT MAIN & MULTI-VESSEL INTERVENTION

- | | |
|---------------------|--|
| ABSTRACT 124 | Clinical Outcome After Implantation of Drug-eluting Stents in Unprotected Left Main Coronary Artery Bifurcation Lesions With the Mini-Crush Technique in Patients With Acute Coronary Syndrome |
|---------------------|--|

MISCELLANEOUS

- | | |
|---------------------|---|
| ABSTRACT 84 | Retrospective analysis of the maximum exercise double product (Robinson index) during the treadmill test as an exact predictor of coronary artery disease |
| ABSTRACT 123 | Clinical experience with novel 6 french intra aortic balloon catheter for the patient who underwent percutaneous coronary intervention |
| ABSTRACT 147 | Does telemetry predict need for repeat coronary angiogram after percutaneous coronary intervention? |
| ABSTRACT 174 | The electrocardiographic changes that mimicking acute myocardial infarction due to lightning strike |
| ABSTRACT 198 | The Zwolle score – an underutilised resource to reduce length of hospital stay after primary PCI |
| ABSTRACT 204 | Coronary percutaneous intervention and its outcome in octogenarian. An experience from tertiary care centre in south asia |

SUNDAY, OCTOBER 24

PEDIATRIC

- ABSTRACT 97** Stenting of major aorto-pulmonary collaterals in non-surgically corrected patients with pulmonary atresia, ventricular septal defect and major aorto-pulmonary collaterals
- ABSTRACT 126** New "Bioabsorbable" Septal Repair Implant For Percutaneous Closure Of Atrial Septal Defect: First Experiences
- ABSTRACT 129** Transcatheter closure of coronary artery fistula using the Amplatzer Duct Occluder II
- ABSTRACT 175** Balloon Angioplasty and stent implantation procedures in right ventricle to pulmonary artery conduit stenosis
- ABSTRACT 178** Radiofrequency perforation in the treatment of pulmonary atresia IVS: challenges faced in the cath lab
- ABSTRACT 181** Monitoring unfractionated heparin in pediatric patients with congenital heart disease undergoing cardiac catheterization or cardiac surgery
- ABSTRACT 185** Early Result Of Stage I and II Hybrid Approach For Hypoplastic Left Heart Syndrome In Saudi Arabia
- ABSTRACT 187** Hybrid approach in treating Aneurismal dilatation of DAO post residual COA ballooning in a young patient
- ABSTRACT 189** Effect of oral sildenafil therapy on improvement of functional capacity and hemodynamic in children with congenital heart disease and pulmonary hypertension
- ABSTRACT 215** Residual stenosis and insufficiency are not associated with balloon:annulus ratio in patients undergoing balloon pulmonary valvuloplasty

PHARMACOTHERAPY

- ABSTRACT 150** All Comer Percutaneous Coronary Interventions With Bivalirudin: Initial Hellenic Experience
- ABSTRACT 208** Intracoronary Reopro during PCI in Acute and Stable patient can influence Stent Thrombosis formation (IRPASST) Study

STENTS (INCLUDING DES)

- ABSTRACT 130** The Genous coronary stent in the 'real world': A single-centre experience
- ABSTRACT 166** Transcatheter antegrade perforation and covered stent implantation to functionally interrupted aorta; case report

VALVULAR INTERVENTIONS AND STRUCTURAL HEART DISEASE

- ABSTRACT 139** Stenotic valve formulas: How accurate are they? Introduction of the Embil valve formula
- ABSTRACT 154** Transcatheter perforation of interrupted aortic arcus (membranous atresia) with stiff ends of the guide-wires and subsequent covered stent implantation: A new method performed in two adolescents
- ABSTRACT 158** Cheatham-Platinum Stents for Aortic Coarctation: Immediate and Early Results
- ABSTRACT 159** A new device, Cardi-O-Fix muscular ventricular septal defect occluder, for percutaneous closure of congenital ventricular septal defects: early and midterm results
- ABSTRACT 168** Transcatheter Closure of Secundum Atrial Septal Defects with the Amplatzer Septal Occluder in Children—Follow-up Results from Kayseri

VASCULAR ACCESS AND ARTERIAL CLOSURE DEVICES

- ABSTRACT 103** Nitroglycerine added to conventional local anesthesia infiltration improves the radial artery cannulation for left cardiac catheterization
- ABSTRACT 127** The Morrision Arterial access Study for InterVEntion in the Coronaries (MASSIVE-C)
- ABSTRACT 167** Transcatheter Closure of Patent Ductus Arteriosus and Interruption of Inferior Vena Cava with Azygous Continuation Using an Amplatzer Duct Occluder-I



Baltimore, MD | May 4-7, 2011

Refunds will only be given if written notification is received by April 20, 2011. No telephone cancellations will be accepted. Refunds are subject to a \$50 processing charge and will be mailed within 8 weeks after the meeting. Refunds will not be given to no-shows.

PLEASE PRINT OR TYPE

Name (First, MI, Last): _____ Degree(s): _____

Organization: _____

Mailing Address (☐ Home ☐ Business): _____

Daytime Telephone: _____ E-mail: _____

Program Director's Signature: _____

Required for all trainees

REGISTRATION TYPE

SCAI 2011 Scientific Sessions – MAY 4-7, 2011 Admission to all events is by badge or ticket only.

	EARLY BIRD (On/before 12/15/10)	ADVANCE (On or before 4/6/11)	REGULAR & ON-SITE (After 4/6/11)
<input type="checkbox"/> SCAI Member	\$399	\$499	\$599
<input type="checkbox"/> Non-Member Physician/Scientist	\$699	\$799	\$899
<input type="checkbox"/> SICP Member	\$299	\$349	\$399
<input type="checkbox"/> Non-Member Resident, Fellow-in-Training, Nurse, Technologist	\$399	\$449	\$499
<input type="checkbox"/> Non-Medical (Industry, Consultant)	\$799	\$899	\$999
<input type="checkbox"/> Invited Speaker	\$-0-	\$-0-	\$-0-
<input type="checkbox"/> Abstract Presenter (First Author Only)	\$-0-	\$-0-	\$-0-

ANNUAL BANQUET

Guest/Annual Banquet tickets can be purchased for **\$50 on/before 4/6/11** and for **\$75 after 4/6/11**.

Number of Annual Banquet tickets (Adult) _____ x \$ _____ = \$ _____

**All attendees and guests must purchase Annual Banquet tickets to attend the Banquet. Registration does not include tickets to the Annual Banquet. Tickets will be reserved under attendee's name.*

PAYMENT INFORMATION

Total Amount \$ _____
Payment must accompany registration

Payment Method: ☐ Check # _____

☐ Mastercard ☐ American Express ☐ Visa

Credit Card # _____

CCV # _____ Exp. Date _____

Name on Card: _____

Signature: _____

HOW DID YOU HEAR ABOUT SCAI 2011?

☐ Email ☐ Advertisement ☐ Conference  ☐ SCAI website ☐ Colleague ☐ I was already aware of it



MAIL
SCAI
2400 N Street NW, Suite 500
Washington, DC 20037-1153



FAX
(866) 733-2576



ONLINE
www.SCAI.org

Questions?
Call (800) 992-SCAI

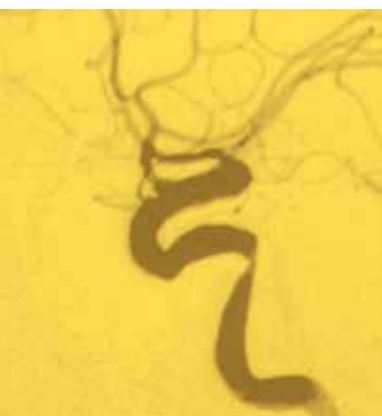


SCAI 2011



Baltimore, MD | May 4-7, 2011

34 Years of the Best of the Best in
INTERVENTIONAL CARDIOLOGY



For details, see
**REGISTRATION
FORM**
(inside-back cover, page 15)

Member Registration Just **\$399**



The Society for Cardiovascular
Angiography and Interventions



www.SCAI.org/SCAI2011